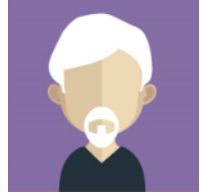


Die (komplizierte) Verwandtschaft



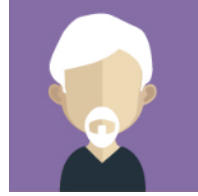
lǎo lao
姥姥



lǎo ye
姥爷



nǎi nai
奶奶



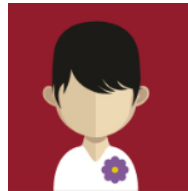
yé ye
爷爷



mā ma
妈妈



bà ba
爸爸

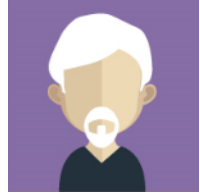


ich

Die (komplizierte) Verwandtschaft



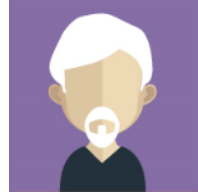
lǎo lao
姥姥



lǎo ye
姥爷



nǎi nai
奶奶



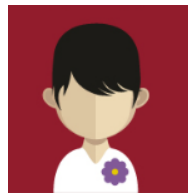
yé ye
爷爷



mā ma
妈妈



bà ba
爸爸



ich



Yan

Die (komplizierte) Verwandtschaft



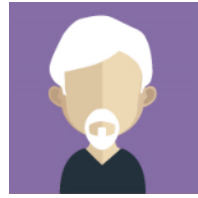
lǎo lao
姥姥



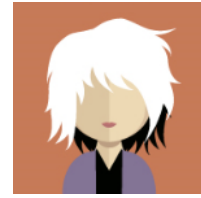
lǎo ye
姥爷



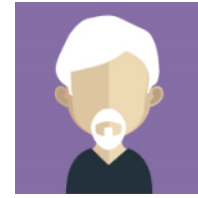
nǎi nai
奶奶



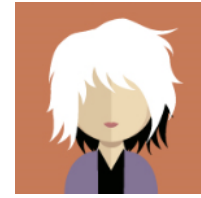
yé ye
爷爷



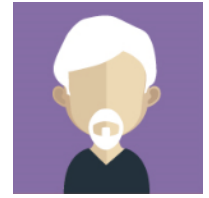
lǎo lao
姥姥



lǎo ye
姥爷



nǎi nai
奶奶



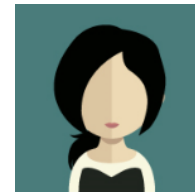
yé ye
爷爷



mā ma
妈妈



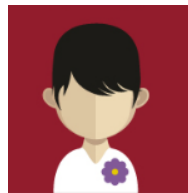
bà ba
爸爸



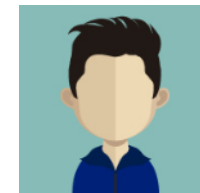
mā ma
妈妈



bà ba
爸爸



ich



Yan

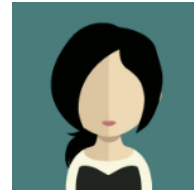
Die (komplizierte) Verwandtschaft



mā ma
妈妈



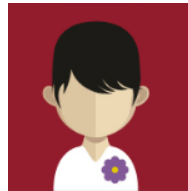
bà ba
爸爸



mā ma
妈妈



bà ba
爸爸



ich



Yan

Die (komplizierte) Verwandtschaft



mā ma
妈妈



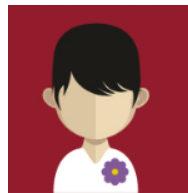
bà ba
爸爸



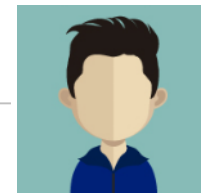
mā ma
妈妈



bà ba
爸爸



ich



Yan

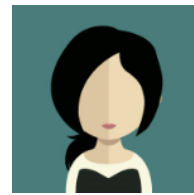
Die (komplizierte) Verwandtschaft



mā ma
妈妈



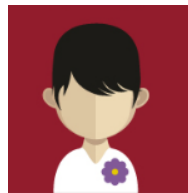
bà ba
爸爸



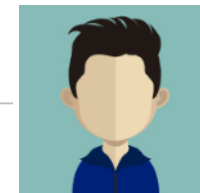
pó po
婆婆



bà ba
爸爸



ich



Yan



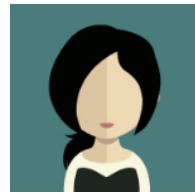
Die (komplizierte) Verwandtschaft



mā ma
妈妈



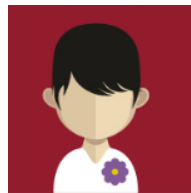
bà ba
爸爸



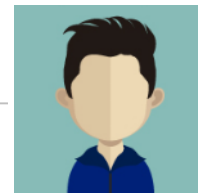
pó po
婆婆



gōng gong
公公



ich



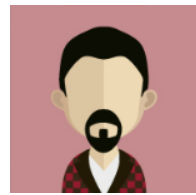
Yan



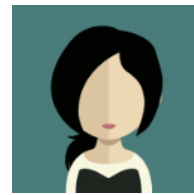
Die (komplizierte) Verwandtschaft



yuè mǔ
岳母



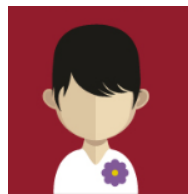
bà ba
爸爸



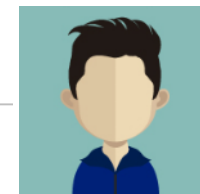
pó po
婆婆



gōng gong
公公



ich



Yan



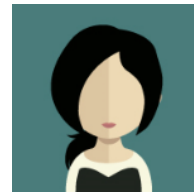
Die (komplizierte) Verwandtschaft



yuè mǔ
岳母



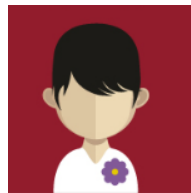
yuè fù
岳父



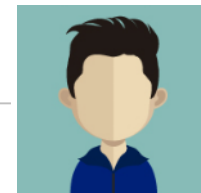
pó po
婆婆



gōng gong
公公



ich



Yan



Die (komplizierte) Verwandtschaft



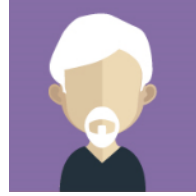
lǎo lao
姥姥



lǎo ye
姥爷



nǎi nai
奶奶



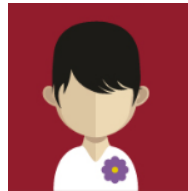
yé ye
爷爷



mā ma
妈妈



bà ba
爸爸



ich

Die (komplizierte) Verwandtschaft



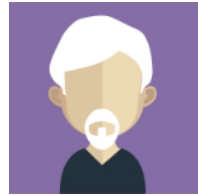
lǎo lao
姥姥



lǎo ye
姥爷



nǎi nai
奶奶



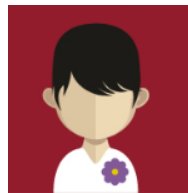
yé ye
爷爷



mā ma
妈妈



bà ba
爸爸



ich

alt



jung

Die (komplizierte) Verwandtschaft



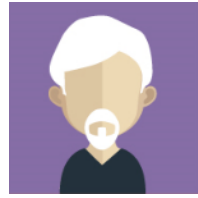
lǎo lao
姥姥



lǎo ye
姥爷



nǎi nai
奶奶



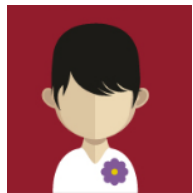
yé ye
爷爷



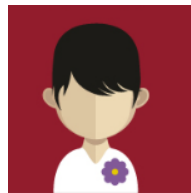
mā ma
妈妈



bà ba
爸爸



jiě jie
姐姐



ich

alt

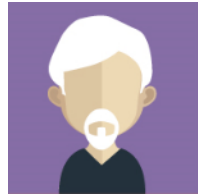


jung

Die (komplizierte) Verwandtschaft



lǎo lao
姥姥



lǎo ye
姥爷



nǎi nai
奶奶



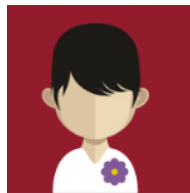
yé ye
爷爷



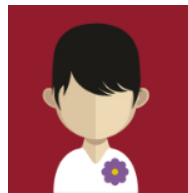
mā ma
妈妈



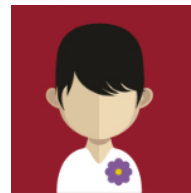
bà ba
爸爸



jiě jie
姐姐



ich



mèi mei
妹妹

alt



jung

Die (komplizierte) Verwandtschaft



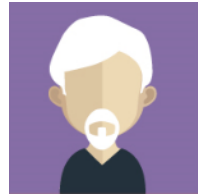
lǎo lao
姥姥



lǎo ye
姥爷



nǎi nai
奶奶



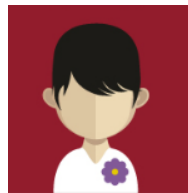
yé ye
爷爷



mā ma
妈妈



bà ba
爸爸



ich

alt

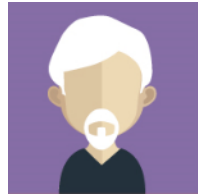


jung

Die (komplizierte) Verwandtschaft



lǎo lao
姥姥



lǎo ye
姥爷



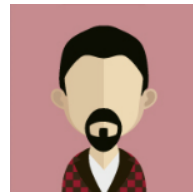
nǎi nai
奶奶



yé ye
爷爷



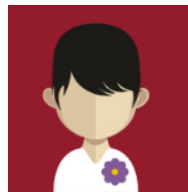
mā ma
妈妈



bà ba
爸爸



gē ge
哥哥



ich

alt

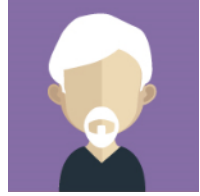


jung

Die (komplizierte) Verwandtschaft



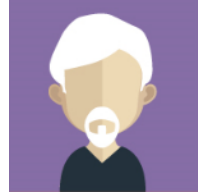
lǎo lao
姥姥



lǎo ye
姥爷



nǚ nai
奶奶



yé ye
爷爷



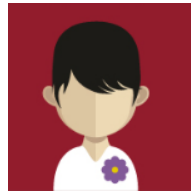
mā ma
妈妈



bà ba
爸爸



gē ge
哥哥



ich



dì di
弟弟

alt

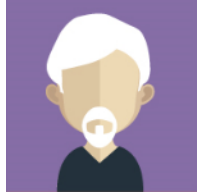


jung

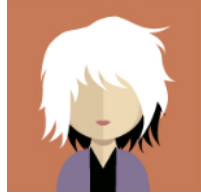
Die (komplizierte) Verwandtschaft



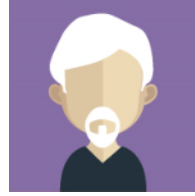
lǎo lao
姥姥



lǎo ye
姥爷



nǎi nai
奶奶



yé ye
爷爷



mā ma
妈妈



bà ba
爸爸



ich

Die (komplizierte) Verwandtschaft



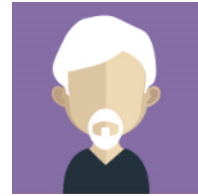
lǎo lao
姥姥



lǎo ye
姥爷



nǎi nai
奶奶



yé ye
爷爷

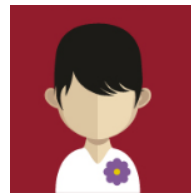


mā ma
妈妈



bà ba
爸爸

alt → jung



ich

Die (komplizierte) Verwandtschaft



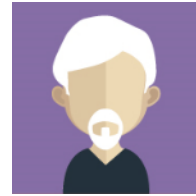
lǎo lao
姥姥



lǎo ye
姥爷



nǎi nai
奶奶



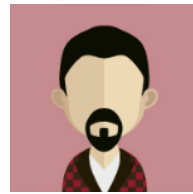
yé ye
爷爷



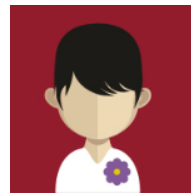
dà yí
大姨



mā ma
妈妈



bà ba
爸爸



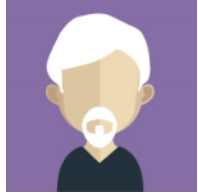
ich

alt → jung

Die (komplizierte) Verwandtschaft



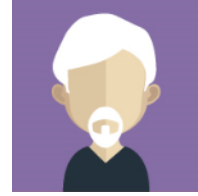
lǎo lao
姥姥



lǎo ye
姥爷



nǎi nai
奶奶



yé ye
爷爷



dà yí
大姨



mā ma
妈妈



xiǎo yí
小姨

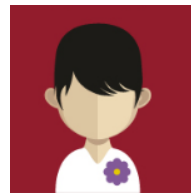
alt



jung



bà ba
爸爸



ich

Die (komplizierte) Verwandtschaft



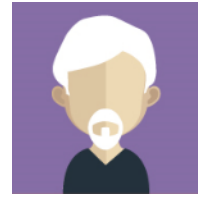
lǎo lao
姥姥



lǎo ye
姥爷



nǎi nai
奶奶



yé ye
爷爷

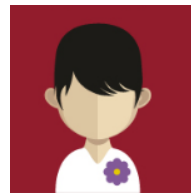


mā ma
妈妈



bà ba
爸爸

alt → jung



ich

Die (komplizierte) Verwandtschaft



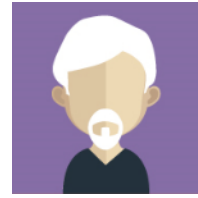
lǎo lao
姥姥



lǎo ye
姥爷



nǎi nai
奶奶



yé ye
爷爷



dà jiù
大舅



mā ma
妈妈

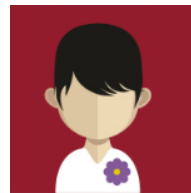


bà ba
爸爸

alt



jung



ich

Die (komplizierte) Verwandtschaft



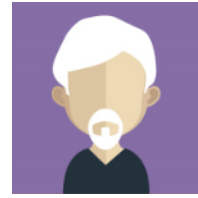
lǎo lao
姥姥



lǎo ye
姥爷



nǎi nai
奶奶



yé ye
爷爷



dà jiù
大舅



mā ma
妈妈

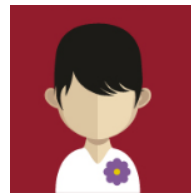


xiǎo jiù
小舅



bà ba
爸爸

alt → jung



ich

Die (komplizierte) Verwandtschaft



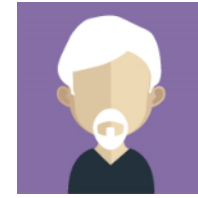
lǎo lao
姥姥



lǎo ye
姥爷



nǎi nai
奶奶



yé ye
爷爷



dà yí
大姨



mā ma
妈妈



xiǎo yí
小姨

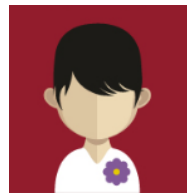
alt



jung



bà ba
爸爸



ich

Die (komplizierte) Verwandtschaft



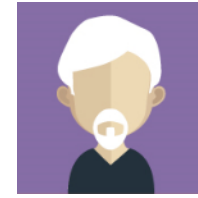
lǎo lao
姥姥



lǎo ye
姥爷



nǎi nai
奶奶



yé ye
爷爷



dà yí
大姨



mā ma
妈妈



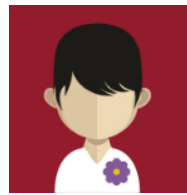
xiǎo yí
小姨

alt → jung



bà ba
爸爸

alt → jung



ich

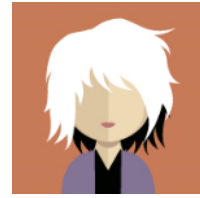
Die (komplizierte) Verwandtschaft



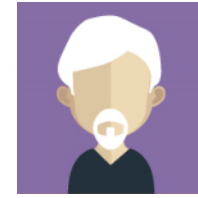
lǎo lao
姥姥



lǎo ye
姥爷



nǎi nai
奶奶



yé ye
爷爷



dà yí
大姨



mā ma
妈妈



xiǎo yí
小姨

alt → jung

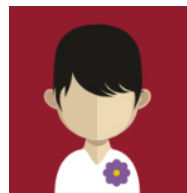


dà gū
大姑



bà ba
爸爸

alt → jung



ich

Die (komplizierte) Verwandtschaft



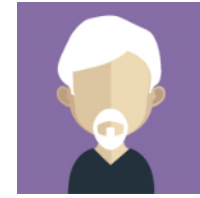
lǎo lao
姥姥



lǎo ye
姥爷



nǎi nai
奶奶



yé ye
爷爷



dà yí
大姨



mā ma
妈妈



xiǎo yí
小姨

alt

→ jung



dà gū
大姑



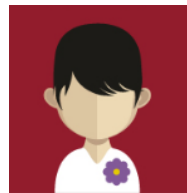
bà ba
爸爸



xiǎo gū
小姑

alt

→ jung



ich

Die (komplizierte) Verwandtschaft



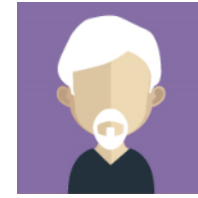
lǎo lao
姥姥



lǎo ye
姥爷



nǎi nai
奶奶



yé ye
爷爷



dà jiù
大舅

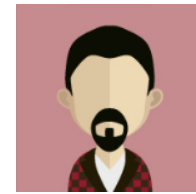


mā ma
妈妈



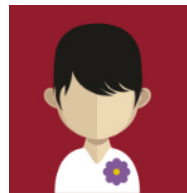
xiǎo jiù
小舅

alt → jung



bà ba
爸爸

alt → jung



ich

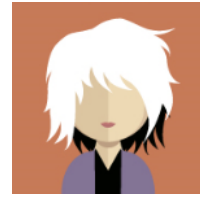
Die (komplizierte) Verwandtschaft



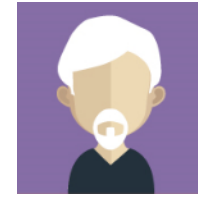
lǎo lao
姥姥



lǎo ye
姥爷



nǎi nai
奶奶



yé ye
爷爷



dà jiù
大舅



mā ma
妈妈



xiǎo jiù
小舅

alt → jung

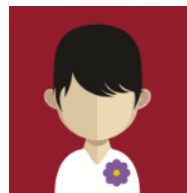


bó bo
伯伯



bà ba
爸爸

alt → jung



ich

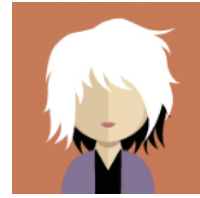
Die (komplizierte) Verwandtschaft



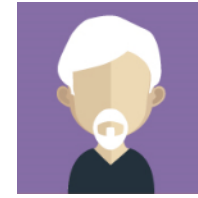
lǎo lao
姥姥



lǎo ye
姥爷



nǎi nai
奶奶



yé ye
爷爷



dà jiù
大舅

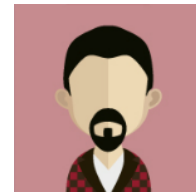


mā ma
妈妈



xiǎo jiù
小舅

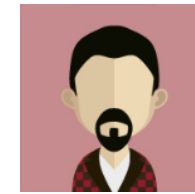
alt → jung



bó bo
伯伯

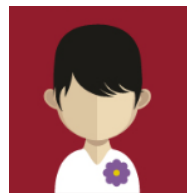


bà ba
爸爸



shū shu
叔叔

alt → jung

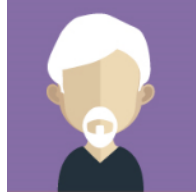


ich

Die (komplizierte) Verwandtschaft



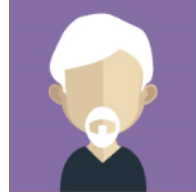
lǎo lao
姥姥



lǎo ye
姥爷



nǎi nai
奶奶



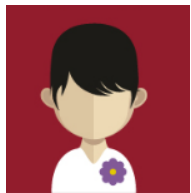
yé ye
爷爷



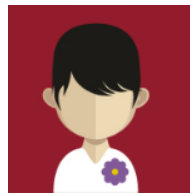
mā ma
妈妈



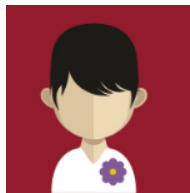
bà ba
爸爸



jiě jie
姐姐



ich



mèi mei
妹妹

alt → jung

Die (komplizierte) Verwandtschaft



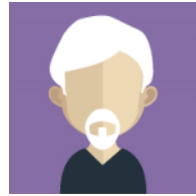
lǎo lao
姥姥



lǎo ye
姥爷



nǎi nai
奶奶



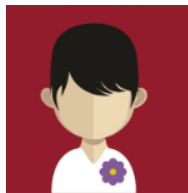
yé ye
爷爷



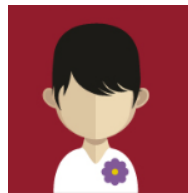
mā ma
妈妈



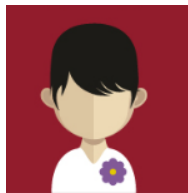
bà ba
爸爸



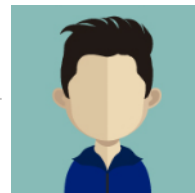
jiě jie
姐姐



ich



mèi mei
妹妹



mèi fu
妹夫

alt  jung

Die (komplizierte) Verwandtschaft



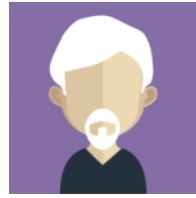
lǎo lao
姥姥



lǎo ye
姥爷



nǎi nai
奶奶



yé ye
爷爷



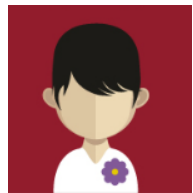
mā ma
妈妈



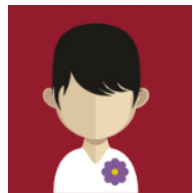
bà ba
爸爸



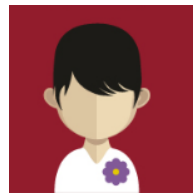
jiě fu
姐夫



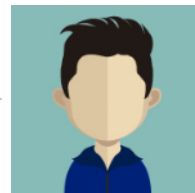
jiě jie
姐姐



ich



mèi mei
妹妹



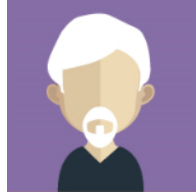
mèi fu
妹夫

alt  jung

Die (komplizierte) Verwandtschaft



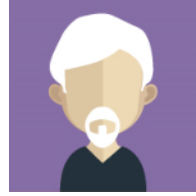
lǎo lao
姥姥



lǎo ye
姥爷



nǎi nai
奶奶



yé ye
爷爷



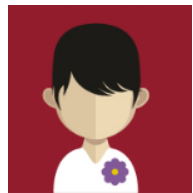
mā ma
妈妈



bà ba
爸爸



gē ge
哥哥



ich



dì di
弟弟

alt  jung

Die (komplizierte) Verwandtschaft



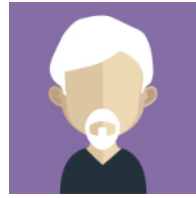
lǎo lao
姥姥



lǎo ye
姥爷



nǎi nai
奶奶



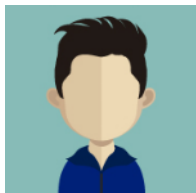
yé ye
爷爷



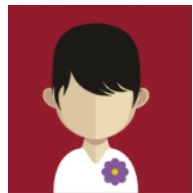
mā ma
妈妈



bà ba
爸爸



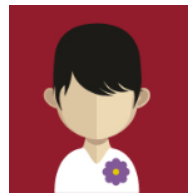
gē ge
哥哥



ich



dì dì
弟弟



dì xī
弟媳

alt  jung

Die (komplizierte) Verwandtschaft



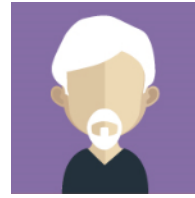
lǎo lao
姥姥



lǎo ye
姥爷



nǎi nai
奶奶



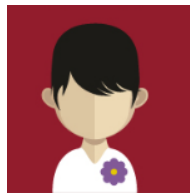
yé ye
爷爷



mā ma
妈妈



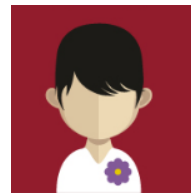
bà ba
爸爸



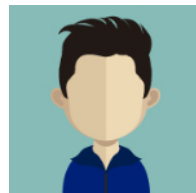
sǎo zi
嫂子



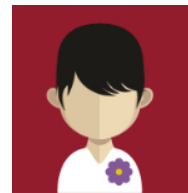
gē ge
哥哥



ich



dì di
弟弟



dì xī
弟媳

alt  jung

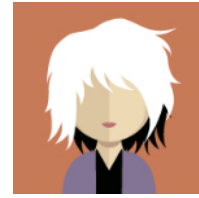
Die (komplizierte) Verwandtschaft



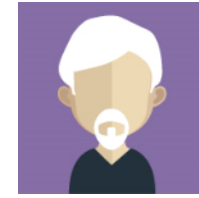
lǎo lao
姥姥



lǎo ye
姥爷



nǎi nai
奶奶



yé ye
爷爷



dà yí
大姨



mā ma
妈妈



xiǎo yí
小姨

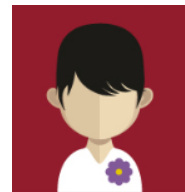
alt



jung



bà ba
爸爸



ich

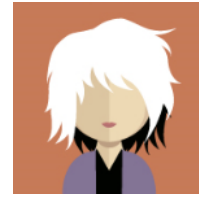
Die (komplizierte) Verwandtschaft



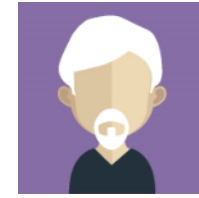
lǎo lao
姥姥



lǎo ye
姥爷



nǎi nai
奶奶



yé ye
爷爷



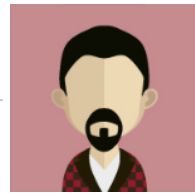
dà yí
大姨



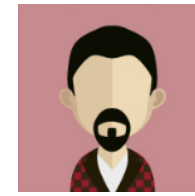
mā ma
妈妈



xiǎo yí
小姨

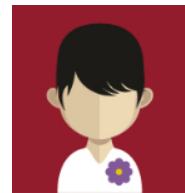


xiǎo yí fu
小姨父



bà ba
爸爸

alt  jung



ich

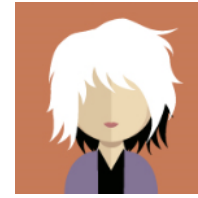
Die (komplizierte) Verwandtschaft



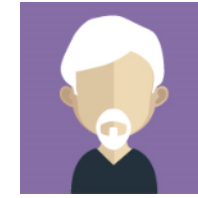
lǎo lao
姥姥



lǎo ye
姥爷



nǎi nai
奶奶



yé ye
爷爷



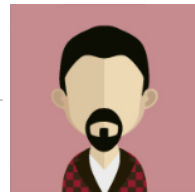
dà yí
大姨



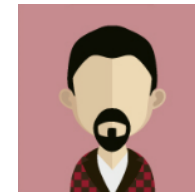
mā ma
妈妈



xiǎo yí
小姨



xiǎo yí fu
小姨父

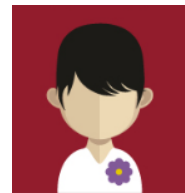


bà ba
爸爸

alt



jung



ich

wenn älter
als ich

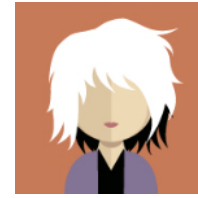
Die (komplizierte) Verwandtschaft



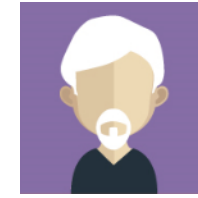
lǎo lao
姥姥



lǎo ye
姥爷



nǎi nai
奶奶



yé ye
爷爷



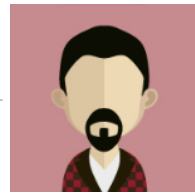
dà yí
大姨



mā ma
妈妈



xiǎo yí
小姨



xiǎo yí fu
小姨父

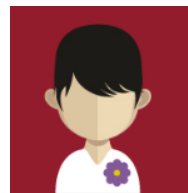


bà ba
爸爸

alt

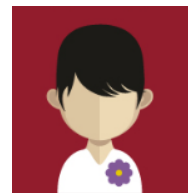


jung



biǎo jiě
表姐

wenn älter
als ich



ich

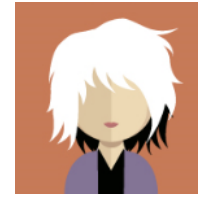
Die (komplizierte) Verwandtschaft



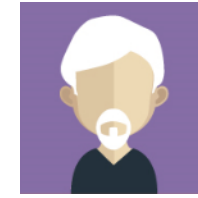
lǎo lao
姥姥



lǎo ye
姥爷



nǎi nai
奶奶



yé ye
爷爷



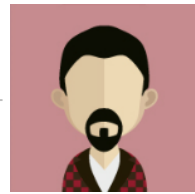
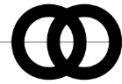
dà yí
大姨



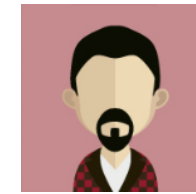
mā ma
妈妈



xiǎo yí
小姨

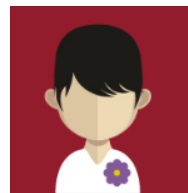


xiǎo yí fu
小姨父



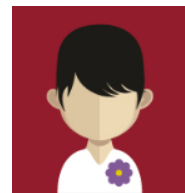
bà ba
爸爸

alt  jung



biǎo jiě
表姐

wenn älter
als ich



ich

wenn jünger
als ich

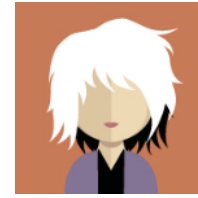
Die (komplizierte) Verwandtschaft



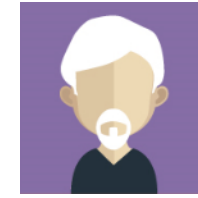
lǎo lao
姥姥



lǎo ye
姥爷



nǎi nai
奶奶



yé ye
爷爷



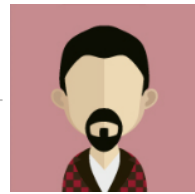
dà yí
大姨



mā ma
妈妈



xiǎo yí
小姨



xiǎo yí fu
小姨父

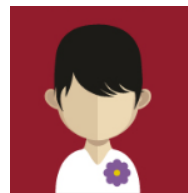


bà ba
爸爸

alt

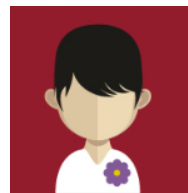


jung



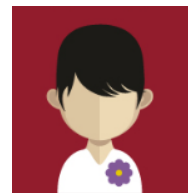
biǎo jiě
表姐

wenn älter
als ich



biǎo mèi
表妹

wenn jünger
als ich



ich

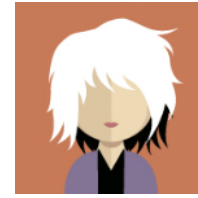
Die (komplizierte) Verwandtschaft



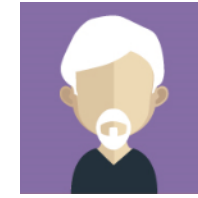
lǎo lao
姥姥



lǎo ye
姥爷



nǎi nai
奶奶



yé ye
爷爷



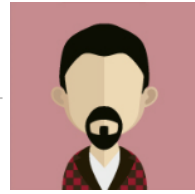
dà yí
大姨



mā ma
妈妈



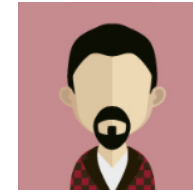
xiǎo yí
小姨



xiǎo yí fu
小姨父



dà gū
大姑

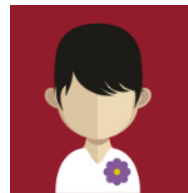


bà ba
爸爸



xiǎo gū
小姑

alt  jung



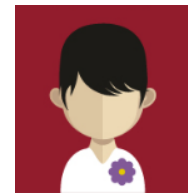
biǎo jiě
表姐

wenn älter
als ich



biǎo mèi
表妹

wenn jünger
als ich



ich

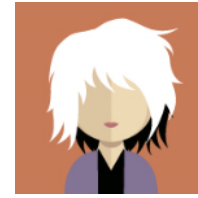
Die (komplizierte) Verwandtschaft



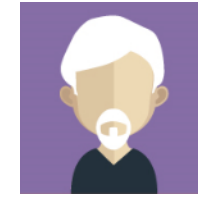
lǎo lao
姥姥



lǎo ye
姥爷



nǎi nai
奶奶



yé ye
爷爷



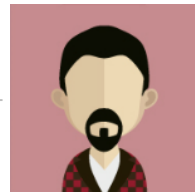
dà yí
大姨



mā ma
妈妈



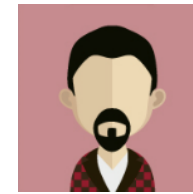
xiǎo yí
小姨



xiǎo yí fu
小姨父



dà gū
大姑



bà ba
爸爸

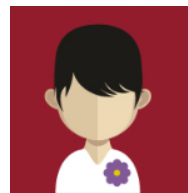


xiǎo gū
小姑



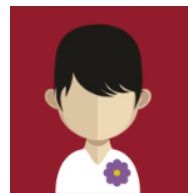
xiǎo gū fu
小姑父

alt  jung



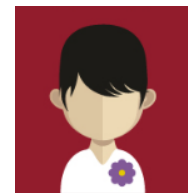
biǎo jiě
表姐

wenn älter
als ich



biǎo mèi
表妹

wenn jünger
als ich



ich

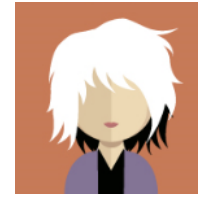
Die (komplizierte) Verwandtschaft



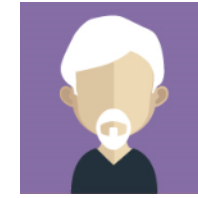
lǎo lao
姥姥



lǎo ye
姥爷



nǎi nai
奶奶



yé ye
爷爷



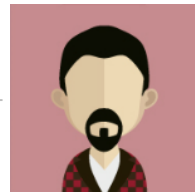
dà yí
大姨



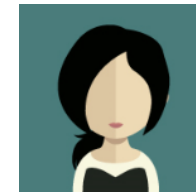
mā ma
妈妈



xiǎo yí
小姨



xiǎo yí fu
小姨父



dà gū
大姑



bà ba
爸爸



xiǎo gū
小姑

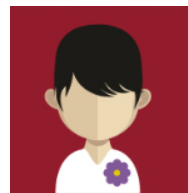


xiǎo gū fu
小姑父

alt

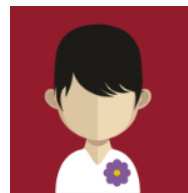


jung



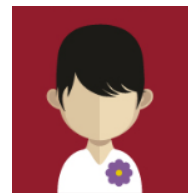
biǎo jiě
表姐

wenn älter
als ich

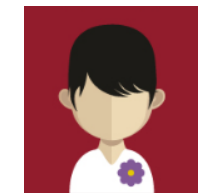


biǎo mèi
表妹

wenn jünger
als ich



ich



táng jiě
堂姐

wenn älter
als ich

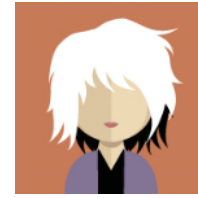
Die (komplizierte) Verwandtschaft



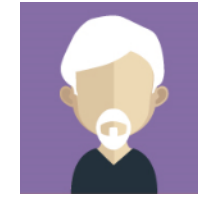
lǎo lao
姥姥



lǎo ye
姥爷



nǎi nai
奶奶



yé ye
爷爷



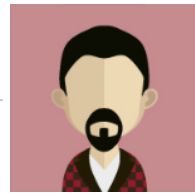
dà yí
大姨



mā ma
妈妈



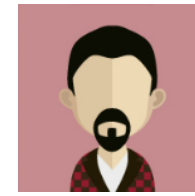
xiǎo yí
小姨



xiǎo yí fu
小姨父



dà gū
大姑



bà ba
爸爸



xiǎo gū
小姑

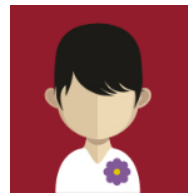


xiǎo gū fu
小姑父

alt

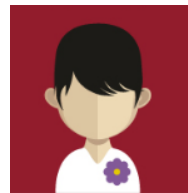


jung



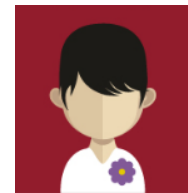
biǎo jiě
表姐

wenn älter
als ich

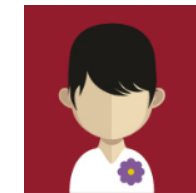


biǎo mèi
表妹

wenn jünger
als ich

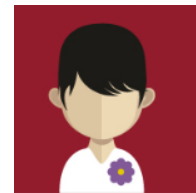


ich



táng jiě
堂姐

wenn älter
als ich



táng mèi
堂妹

wenn jünger
als ich

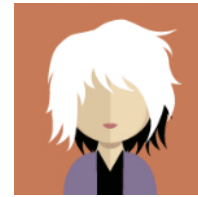
Die (komplizierte) Verwandtschaft



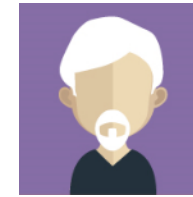
lǎo lao
姥姥



lǎo ye
姥爷



nǎi nai
奶奶



yé ye
爷爷



dà jiù
大舅

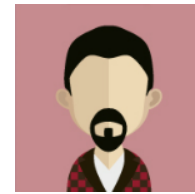


mā ma
妈妈



xiǎo jiù
小舅

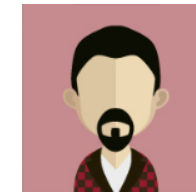
alt → jung



bó bo
伯伯

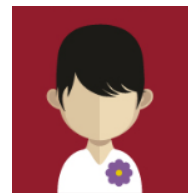


bà ba
爸爸



shū shu
叔叔

alt → jung



ich

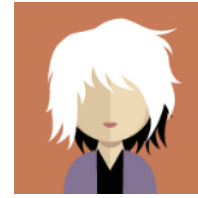
Die (komplizierte) Verwandtschaft



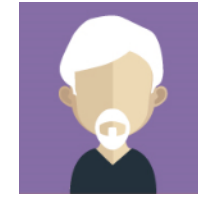
lǎo lao
姥姥



lǎo ye
姥爷



nǎi nai
奶奶



yé ye
爷爷



dà jiù
大舅



mā ma
妈妈



xiǎo jiù
小舅



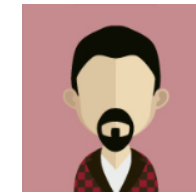
jiù mā
舅妈



bó bo
伯伯



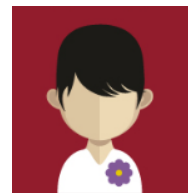
bà ba
爸爸



shū shu
叔叔

alt → jung

alt → jung



ich

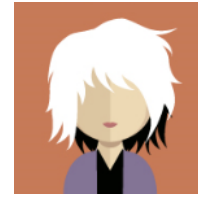
Die (komplizierte) Verwandtschaft



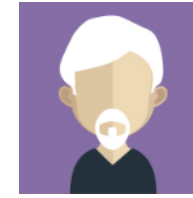
lǎo lao
姥姥



lǎo ye
姥爷



nǎi nai
奶奶



yé ye
爷爷



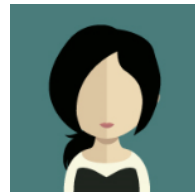
dà jiù
大舅



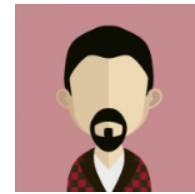
mā ma
妈妈



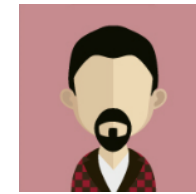
xiǎo jiù
小舅



jiù mā
舅妈



bó bo
伯伯



bà ba
爸爸



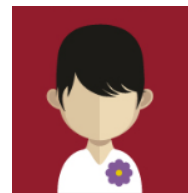
shū shu
叔叔



shěn shen
婶婶

alt → jung

alt → jung



ich

fulu

Vielfalt, Verständnis, Toleranz

More on: fulu-culture.org